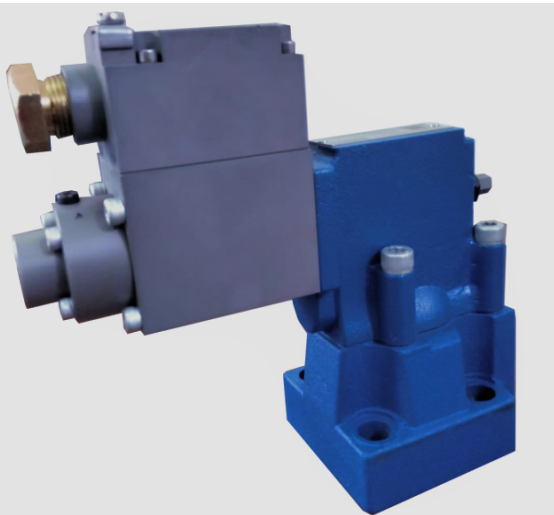


# Explosion isolation Proportional pressure relief valve

Type HD-DBE/DBEM...30B/FB



Sizes 10, 25 and 32  
Up to 315 bar  
Up to 600 L/min

## Features

- Sub-plate mounting:
- Porting pattern to DIN 24 340 form E and ISO 6264
- For installation in manifolds
- 4 pressure ratings
- Max. pressure limitation , optional
- Amplifier type VT-2000 (must be ordered separately)

## Contents

Function and configuration	02
Ordering code	03
Symbols	03
Technical data	04
Electrical data	04
Characteristic curves	05-06
Unit dimensions	07

## Function and configuration

DBE valves are pilot operated pressure relief valves. They are used to continuously set the pressure in hydraulic systems by electrical signal.

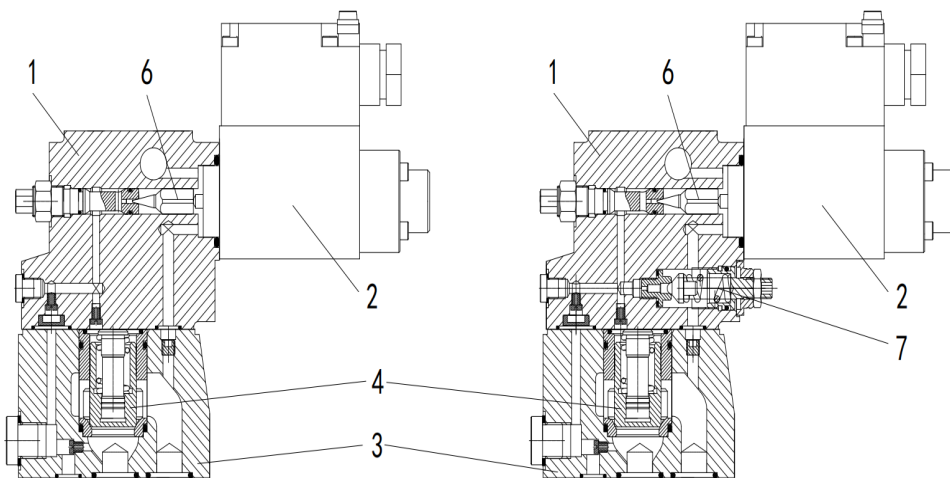
Basically these valves consist of a pilot valve (1) with proportional solenoid (2) and the main valve (3) with main spool insert (4).

### Type HD-DBE...FB

The pressure limit is in relation to the electrical current value and set by the proportional solenoid (2). The system pressure is applied to the main spool (4). At the same time the pressure is applied to the spring loaded side of the main spool (4) and the pilot poppet (6) via orifice (5) at the pilot valve (1). If the hydraulic force exceeds the solenoid force, the pilot poppet (6) opens. Pilot fluid can flow back to tank and pressure drop caused by the orifices effects the main spool (4). Then main spool (4) opens the channel from pump to tank.

### Type HD-DBEM...FB

Optionally the valve can be supplied with an additional spring loaded pilot control valve (7) for maximum pressure safety (redundant pressure safety).



X A B  
▲ ▲ ▼

Type HD-DBE...FB

X A B  
▲ ▲ ▼

Type HD-DBEM...FB

## Ordering code

01	02	03	04	05	06	07	08	09	10		
HD	-	DBE		-	30B	/		G24	/	FB	*

01	Huade hydraulic	HD
02	Proportional pressure relief valve	DBE
03	Without maximum pressure safety	No code
	With maximum pressure safety	M
04	Nominal size 10	10
	Nominal size 25	20
	Nominal size 32	30
05	Series 30	30B
06	Max pressure 50 Bar	50
	Max pressure 100 Bar	100
	Max pressure 200 Bar	200
	Max pressure 315 Bar	315
07	Pilot oil return external	Y
	Unloading port X, pilot oil return external	XY
08	24 V DC voltage	G24
09	Explosion isolation Exd I	FB
	Explosion isolation Exd II C T4	FB1
10	Further details in the plain text	*

## Symbols



HD-DBE...Y...FB



HD-DBE...XY...FB



HD-DBEM...Y...FB



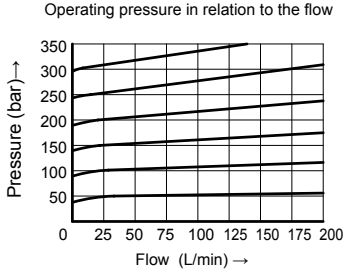
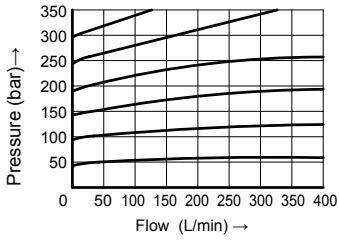
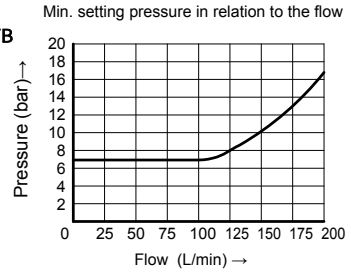
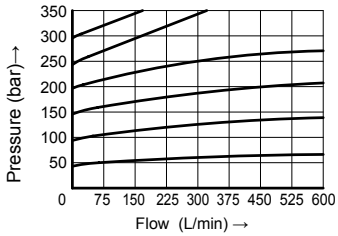
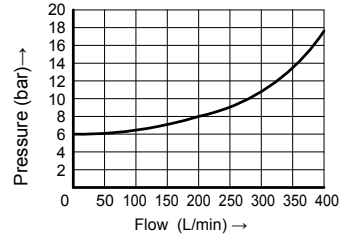
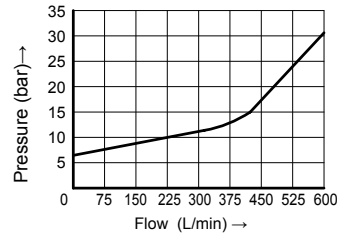
HD-DBEM...XY...FB

## Technical data

Fluid	Mineral oil suitable for NBR and FKM seal Phosphate ester for FKM seal			
Fluid temperature range	°C	-30 to +80 (NBR seal) -20 to +80 (FKM seal)		
Viscosity range	mm <sup>2</sup> /s	2.8 to 380		
Degree of contamination	Maximum permissible degree of fluid contamination: Class 9. NAS 1638 or 20/18/15, ISO4406			
Max. operating pressure Port A, B, X	bar	315		
Max. setting pressure	bar	50; 100; 200; 315		
Min. setting pressure	In relation to Flow (Q), see characteristic curves			
Pressure at zero command value	= min. setting pressure			
Return oil pressure port Y	bar	Separate and at zero pressure to tank		
Max. pressure safety (infinitely adjustable)	setting pressure	Pressure range under Max. safety pressure		
	50 bar	10-60 <sup>+20</sup> bar		
	100 bar	10-120 <sup>+20</sup> bar		
	200 bar	10-220 <sup>+20</sup> bar		
	315 bar	10-340 <sup>+20</sup> bar		
Max. pressure safety setting condition	When rated pressure is 50 bar, between 60 bar and 80 bar			
	When rated pressure is 100 bar, between 120 bar and 140 bar			
	When rated pressure is 200 bar, between 220 bar and 240 bar			
	When rated pressure is 315 bar, between 340 bar and 360 bar			
Nominal size		10	25	32
Max. flow-rate	L/min	200	400	600
Pilot oil (for pilot valve)	L/min	0.7 to 2		
Linearity	±3.5%			
Repeatability	<±2%			
Hysteresis	with shimmy		without shimmy	
	±1.5% P max (200Hz, amplitude 200mAssl)		±4.5% P max	
Shifting time	30~150ms (independent with the system)			

## Electrical data

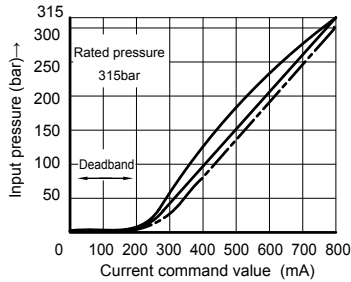
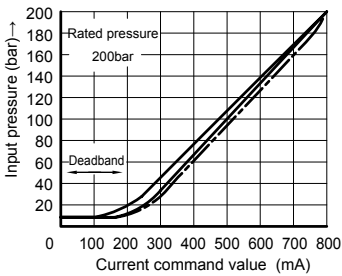
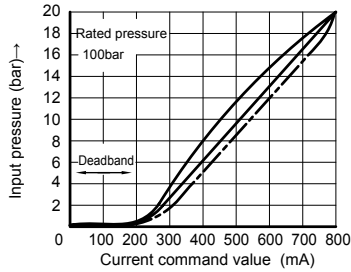
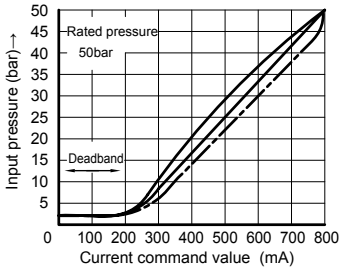
Power source	DC	
Min. solenoid current	mA	100
Max. solenoid current	mA	800
Coil resistance	19.5Ω at 20°C, Max. warm value: 28.8Ω	
Working status	Continuous	
Max. working environmental temperature	+50°C	
Electrical connection	Plug-in connector to DIN EN 175301-803/ISO 4400	
Insulation to DIN 40 050	IP 65	
Ampilfier	VT2000	

**Characteristic curves**(Measured at  $\vartheta_{oil}=40^{\circ}\text{C} \pm 5^{\circ}\text{C}$ , using HLP46)**HD-DBE10...FB****HD-DBE20...FB****HD-DBE30...FB**

## Characteristic curves

(Measured at  $\vartheta_{oil}=40^{\circ}\text{C} \pm 5^{\circ}\text{C}$ , using HLP46)

Inputting pressure/current demand curve type HD-DBE10, 20 and 30...FB



Measured under flow 27 L/min of type HD-DBE10,20and30...FB

### Hysteresis

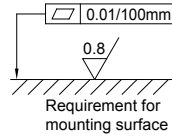
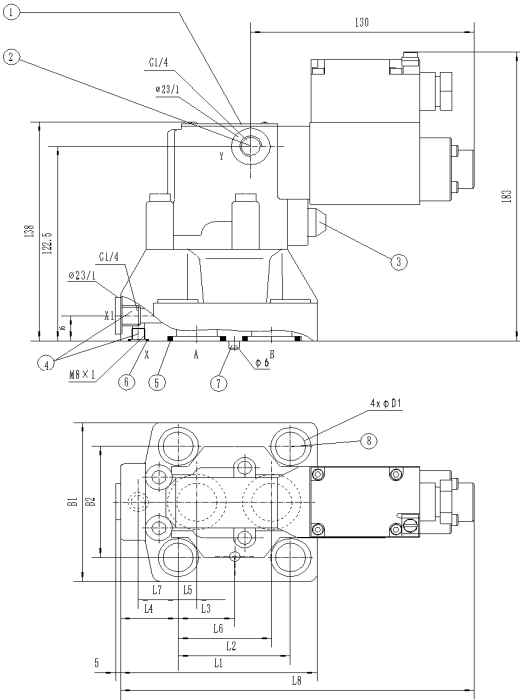
- With shimmy ————
- Without shimmy - - - - -

**Note:** To get min. preset pressure, pilot current is not permitted to exceed 100mA .

## Unit dimensions

(Dimensions in mm)

### Pressure relief valve of type HD-DBE/DBEM...FB



- 1 Name plate
- 2 (Port Y) pilot oil drain always external and separate to tank at zero pressure.
- 3 Max. pressure limitation
- 4 External pilot supply (X and X1, optional)
- 5 O-ring (port A and B)
- 6 O-ring 9.25 × 1.78 (port X)
- 7 Locating pin
- 8 Fixing screw hole

#### Valve fixing screws:

Internal hexagon screw GB/T 70.1-10.9,

**DBE/DBEM10:** M12 × 45, tightening torque,  $M_A=130$  Nm

**DBE/DBEM20:** M16 × 50, tightening torque,  $M_A=310$  Nm

**DBE/DBEM30:** M18 × 50, tightening torque,  $M_A=430$  Nm

Type	B1	B2	Weight	O-ring (Port A and port B)			
HD-DBE(M) ...FB	10	78	53.8	4.4kg	17.12 × 2.62		
	20	100	70	4.8kg	28.17 × 3.53		
	30	115	82.6	7.1kg	34.52 × 3.53		
Type	L1	L2	L3	L4	L5	L6	
HD-DBE(M) ...FB	10	91	53.8	22.1	27.5	22.1	47.5
	20	116	66.7	33.4	33.3	11.1	55.6
	30	147.5	88.9	44.5	41	12.7	76.2
Type	L7	L8	D1	D2	D3	D4	
HD-DBE(M) ...FB	10	0	193.5	14	M12	6	12
	20	23.8	207	18	M16	6	22
	30	31.8	217	20	M18	7	30

